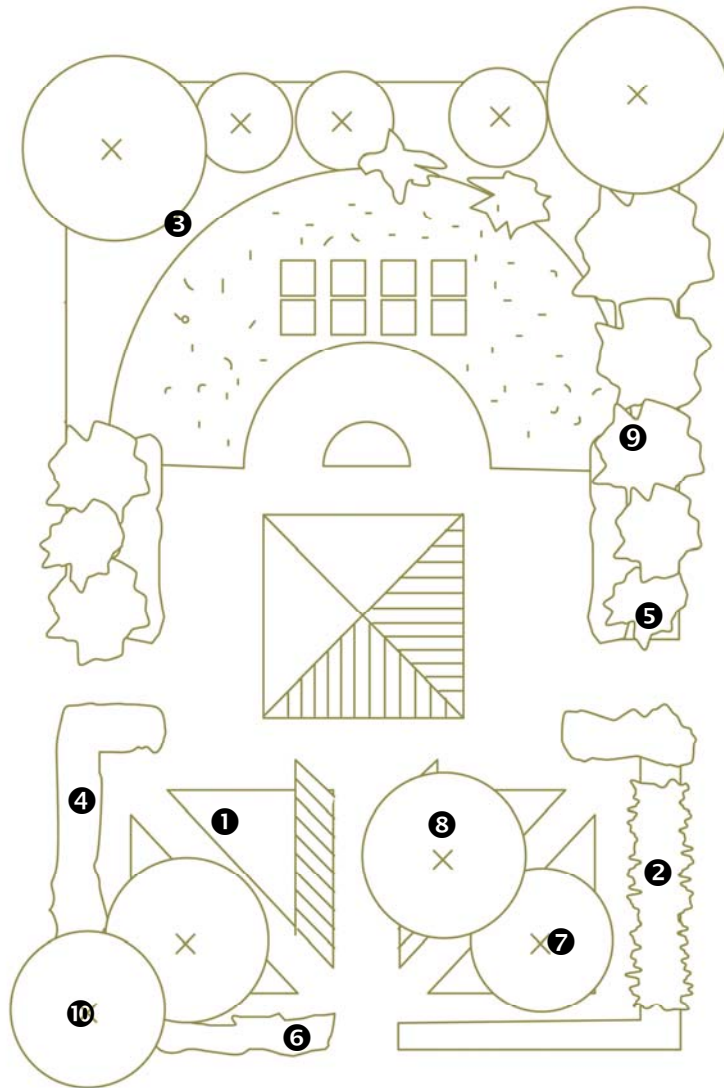


Wild Herb Garden

Australia is a great place for bush tucker with Aboriginal Australians surviving tens of thousands of years with our native plants as a significant part of their diet. There is something rewarding about growing native plants that have a human use. Even if we know it's pretty unlikely that we'll cook with them or use them medicinally, somehow it gives us a great feeling to know that if we really had to, we could go out and reap a bountiful harvest from the garden.

Redland City has its share of useful and edible plants with many of them displayed here in this garden. The majority of these plants grow naturally on coastal dunes and in rainforests. The habitats in between historically produced an abundance of meat. Many of these bush tucker and medicinal plants are amongst the hardest species available, suitable for any backyard garden.



Species in the garden



Carpobrotus glaucescens **Pigface**

A well known succulent with thick leaves and large pink flowers. The base of the flowers turn red and the fleshy fruit tastes like a salty plum.



Tetragonia tetragonoides ① **Warrigal Greens**

An attractive ground cover with small yellow flowers. Leaves can be used as a cooked vegetable, but shouldn't be eaten raw.



Rubus moluccanus ② **Native Raspberry**

A prickly, sprawling shrub or groundcover to 1m in a range of sites. Best to cut back once a year to manage it. Eat the fruits when they are rich red and starting to soften.



Cissus antarctica ③ **Native Grape**

Vigorous, fast growing vine with large leaves and edible fruits. Very hardy, good for vegetating slopes and bare areas. To best appreciate the fruits, peel the skin and only eat the dark flesh.



Austromyrtus dulcis ④ **Midyim Berry**

A small shrub to 50cm with reddish foliage and small white flowers. Prefers a more sheltered site but very hardy. Soft, spotty fruits are sweet and make a nice jam.



Alpinia caerulea ⑤ **Native Ginger**

Attractive rainforest herb to 1.5m that prefers a moist site with at least partial shade. The heads of white tubular flowers are followed by clusters of edible blue fruits. The root tips are also edible. A great plant for a shady understorey.



Dodonaea viscosa ⑥ **Sticky Hop Bush**

A variable shrub to about 4m, with sticky leaves. Attractive foliage plant with papery seed capsules that go from green to red as they mature.



Petalostigma pubescens ⑦ **Quinine Tree**

Really attractive small tree with great shape, growing to 6m. The bark is dark and fissured, the trunk often gnarled. The bright orange berries are very unpleasant to taste but are reputed to help prevent malaria.



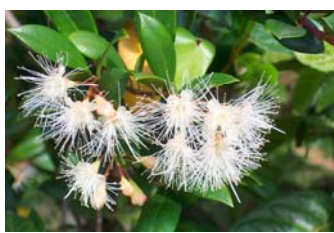
Sterculia quadrifida ⑧ **Peanut Tree**

A handsome, bushy tree that will grow from 6m to 18m depending on nutrients and water at the site. The tree is mostly deciduous in winter. The hard fruits require careful peeling before eating.



Podocarpus elatus **Brown Pine**

A lovely tree to 20m with deep green strap-like leaves. It tolerates a wide range of conditions and can be made into an attractive container plant. The deep purple fruit look like grapes and are particularly sweet and tasty.



Syzygium australe ⑨ **Creek Lilly-pilly**

An attractive medium-sized rainforest tree to 20m with glossy green leaves and tufted white flowers, similar to a Eucalypt. The pinkish-red fruits that follow are a favourite food source of many birds and are sweet to taste.



Macadamia integrifolia ⑩ **Macadamia**

A handsome rainforest tree to 20m with attractive but prickly foliage, and tasty, edible nuts. The only native food tree to have developed into a broad, worldwide crop.

Some other species to consider

Trees

Ficus coronata
Hibiscus heterophyllus
Pandanus tectorius
Pipturus argenteus

Sandpaper Fig
Native Rosella
Screw Pine
Native Mulberry

Herbs, small plants

Enchylaena tomentosa
Myoporum acuminatum
Sesuvium portulacastrum
Trachymene incisa

Ruby Saltbush
Creeping Boobiolla
Sea Purslane
Wild Parsnip

Shrubs

Alpinia caerulea
Melastoma malabathricum
Psychotria loniceroides
Xanthorrhoea latifolia

Native Ginger
Blue Tongue
Hairy Psychotria
Grass Tree

Vines & Creepers

Canavalia rosea
Dioscorea transversa
Jasminium didymum
Rubus rosifolius

Coastal Jack Bean
Native Yam
Native Jasmine
Native Raspberry