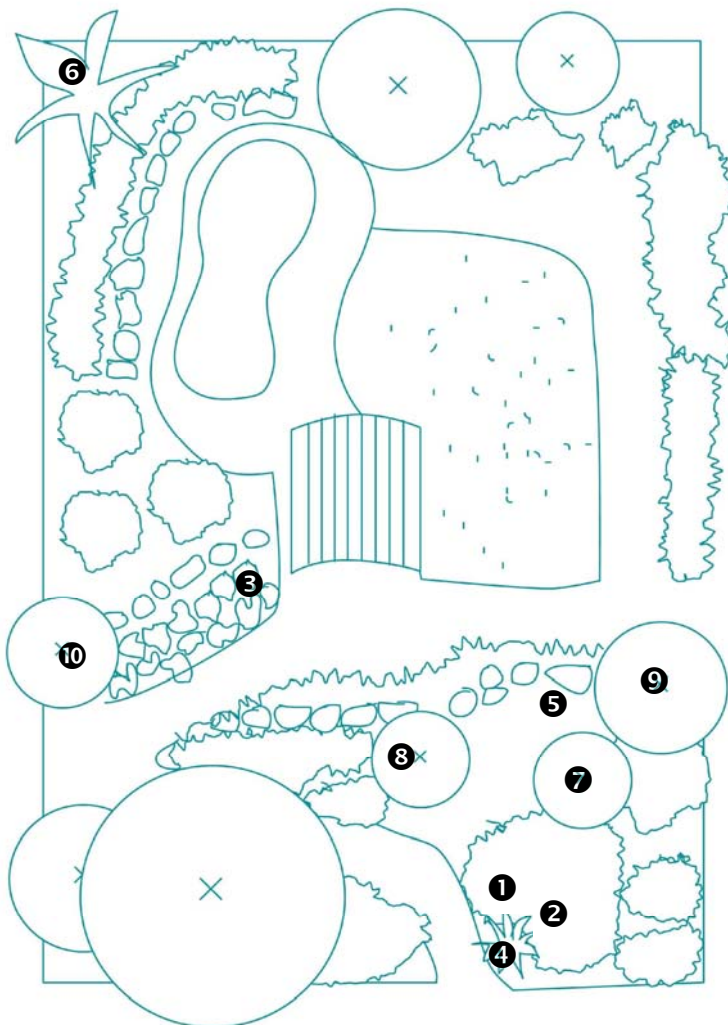


# Coastal Garden

Coastal plants can find a place in just about any garden. They are amongst the toughest of all plants, adapted to withstand full sun, little rain, wind and salty spray. This makes them the best plants for any garden close to the coast but also further away, given their ability to cope with pretty much anything you can throw at them.

Coastal plants are typically full of colour. Many have hairy or waxy coatings on the leaves and white under-surfaces that reflect heat and light. This leads to a variety of leaf shapes and colours that add diversity to the garden. Many coastal plants also have large, colourful flowers with yellow, white and pink especially prevalent. The range of ground covers here is higher than any other habitat as they have evolved to take on an important role in the stabilisation of dunes.

Many coastal trees make great windbreak species, being used to strong coastal winds, and are able to withstand storms. They are also typically fast growing, a necessity in moving sand dunes. Coastal areas have abundant birdlife, especially nectar feeders, and an assortment of these species will help you attract these birds to your garden.



## Species in the garden



***Carpobrotus glaucescens* ①**  
**Pigface**

A well known succulent with thick leaves and large pink flower. Loves sun and needs virtually no water to survive. Red fruits after flowering are quite tasty.



***Xerochrysum bracteatum* ②**  
**Paper Daisy**

A beautiful daisy with brilliant yellow flowers that last for a long time before setting seed. Will survive for several years but best treated as an annual to keep them looking fresh.



***Canavalia rosea***  
**Coastal Jack Bean**

A sprawling groundcover with round three-lobed leaves, large seed pods and pink pea flowers. Grows well on a fence, trellis or along the ground.



***Dianella congesta* ③**  
**Blue Flax Lily**

A grass like wildflower with deep green leaves, purple lily-like flowers and bright purple, edible fruit. One of several species in the group, all of which are very hardy.



***Crinum pedunculatum* ④**  
**River Lily**

A tall lily (to 1m) of coastal wetlands with strapping green leaves and large white lily flowers. Copes well with dry conditions but will do best with a bit of water. A popular plant for modern gardens.



***Austromyrtus dulcis***  
**Midyim Berry**

A small shrub to 50cm with reddish foliage and small white flowers. Soft fruits are sweet to taste and can be made into jam. Prefers a more sheltered site but very hardy.



***Leptospermum speciosum* ⑤**  
**Showy Tea-tree**

A shapely shrub to 3m that likes a well drained soil. Unusual foliage is a feature while the flowers are in close clusters. Hardy and long-lived and easy to grow more from seed.



***Pandanus tectorius* ⑥**  
**Screw Pine**

Palm-like coastal tree to 5m with a twisting trunk and serrated leaves. Survives just about anywhere once established.



***Rapanea variabilis* ⑦**  
**Muttonwood**

A hardy shrub or small tree to 6m with wavy-edged leaves. Gets covered in small flowers and fruits along the stems in spring. Birds and butterflies love it!



***Acronychia imperforata* ⑧**  
**Beach Acronychia**

A superb foliage tree to 8m with lush green foliage year round and small yellow flowers in spring.



***Banksia integrifolia* ⑨**  
**Coastal Banksia**

The classic coastal banksia, to 15m in some areas. Usually smaller in gardens and pruning to 3-4m will improve flowering.



***Callitris columellaris* ⑩**  
**Bribie Island Pine**

A handsome tree to 20m in its natural coastal habitat. The most successful native plant for hedging, check out the maze at the end of the gardens. A hardy and fast growing species.

## Some other species to consider

Trees		Herbs, small plants	
<i>Banksia aemula</i>	Wallum Banksia	<i>Melanthera biflora</i>	Sea Daisy
<i>Casuarina equisetifolia</i>	Coastal She-oak	<i>Myoporum acuminatum</i>	Creeping Boobiolla
<i>Eucalyptus tereticornis</i>	Queensland Blue Gum	<i>Sporobolus virginicus</i>	Salt Couch
<i>Jagera pseudorhus</i>	Foambark	<i>Tetragonia tetragonoides</i>	Warrigal Greens
Shrubs		Vines & Creepers	
<i>Acacia sophorae</i>	Coastal Wattle	<i>Hibbertia scandens</i>	Snake Vine
<i>Baeckea frutescens</i>	Weeping Baeckea	<i>Ipomoea pes-caprae</i>	Goat's foot
<i>Cupaniopsis anarcardioides</i>	Tuckeroo	<i>Jasminium didymum</i>	Native Jasmine
<i>Ozothamnus diosmifolius</i>	Sago Bush	<i>Scaevola calendulacea</i>	Beach Fan Flower